



Fielding Road, London, W4 1HP

Guide Price £1,375,000

**WHITMAN & CO.**

SALES · LETTINGS · COMMERCIAL

- Four bedroomed semi detached house
- 17ft reception room
- Fully integrated kitchen/breakfast room

- Bedford Park area
- Large loft
- Close proximity of Turnham Green station and the high road.

Tenure - Freehold  
Local Authority - Ealing  
Council Tax - Band F

## THE PROPERTY

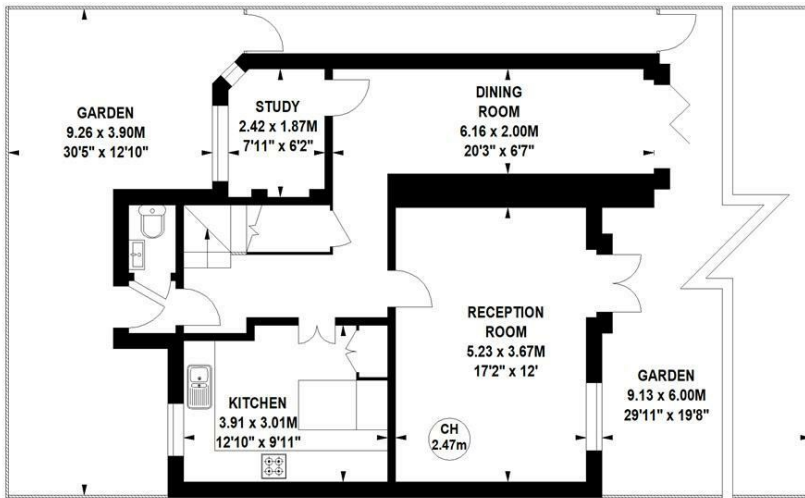
An immaculately presented four bedroom semi detached house, with large loft, south facing garden and ideally located in the Bedford Park area offering close proximity to all amenities. Accommodation comprises: four bedrooms, luxury bathroom, large loft, spacious entrance hall, 17' reception room, fully integrated kitchen/breakfast room, dining room, study, cloakroom, private south facing landscaped garden, secured covered side access. The house is situated within close proximity of Turnham Green tube station and the extensive bars, shops and restaurants on Chiswick High Road. No chain.

### Fielding Road, W4

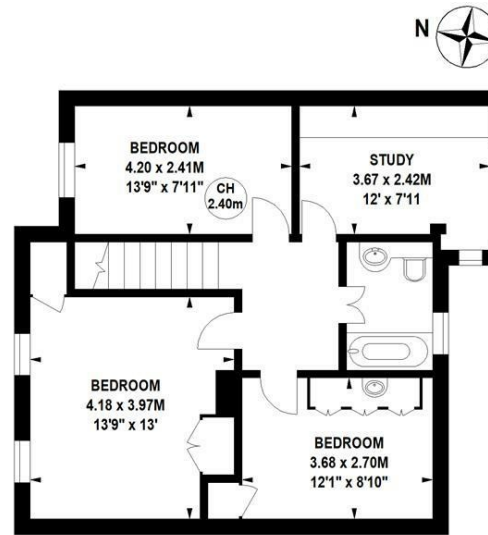
Approximate gross internal area

125.60 sq m / 1352 sq ft

Key :  
CH - Ceiling Height



Ground Floor



First Floor

Not to scale, for guidance only and must not be relied upon as a statement of fact.  
All measurements and areas are approximate only

## SITUATION



5-7 Turnham Green Terrace, Chiswick, London, W4 1RG

Tel 020 8747 8800

E-mail [sales@whitmanandco.com](mailto:sales@whitmanandco.com)

Website [www.whitmanandco.com](http://www.whitmanandco.com)